



Snap Dock's Floating Dock System

Assembly Guide

Published: July 25, 2022

Revised: July 26, 2023

For questions about Snap Dock's operation/performance, products, accessories, and parts call your local dealer for information.

Visit our website at www.snapdock.com to find more information about our products.

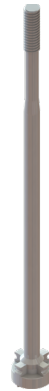
Floating Dock Assembly

1

Check for all floating dock parts prior to assembly.



(2) COUPLERS



(1) LONG BOLT



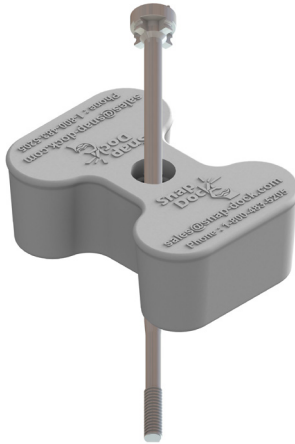
(1) NUT



(1) DRIVETOOL

2

Insert long bolt into coupler.



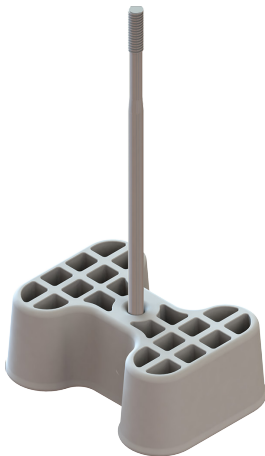
3

Use mallet to secure the long bolt to the coupler.



4

Partially Assembled Coupler.



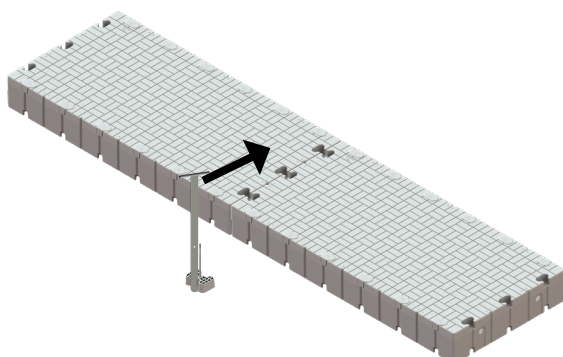
5

Place the Partially Assembled Coupler perpendicular onto the In Water Installation Tool (Here after referred to *Installation Tool*).



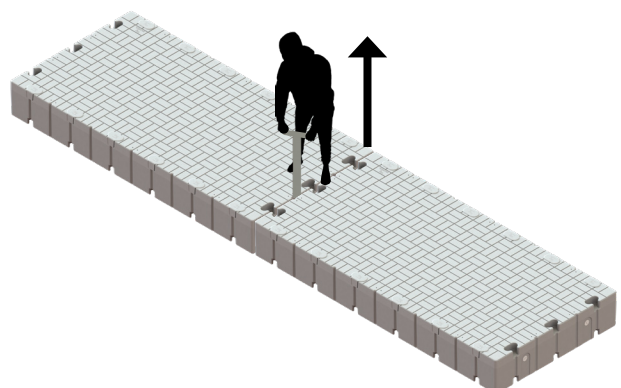
6

Run the tool with the partially assembled coupler along the seam to the middle bottom pocket (Start connecting couplers from the middle and work outward).



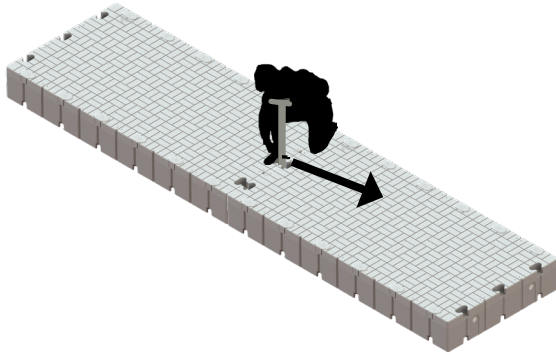
7

To seat the partially assembled coupler, pull up on the Installation Tool until the bolt appears in the top pocket.



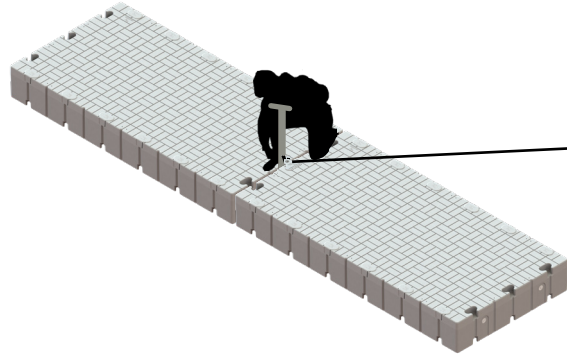
8

Slide a screwdriver through the hole in the Installation Tool to hold the partially assembled coupler in place.



9

Use the Nut and Drive Tool included in the coupler set to secure the second coupler into the top pocket to finish the coupler installation. Note: ***Need 1³/₁₆ socket & socket wrench***



10

Repeat steps 1 through 9 on the other pockets along the seam.

